

Any User. Any Data. Any Deployment.

Product
Brochure



Actuate iServer is a scalable enterprise reporting server for generating, managing and securely delivering reporting and analytic content to 100 percent of an organization's users. Actuate iServer provides the industry's most complete and powerful infrastructure for disseminating interactive, actionable business information to employees, customers and partners. In addition, Actuate iServer integrates information from any data source and application to serve both internal and external users.

Overview

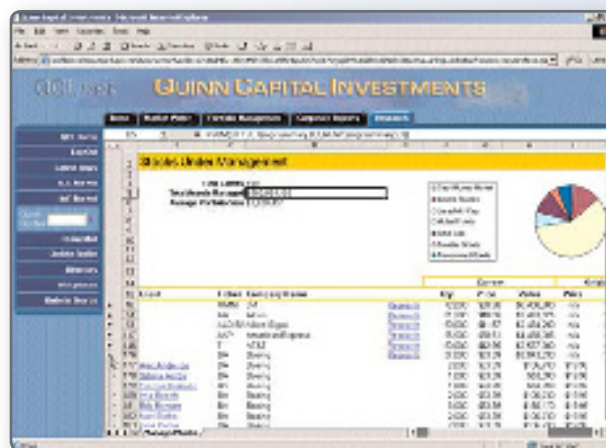
Actuate iServer is a scalable enterprise server for generating, managing and securely delivering reporting and analytic content to 100 percent of an organization's users. Actuate iServer provides the industry's most complete and powerful infrastructure for disseminating interactive, actionable business information to employees, customers and partners. In addition, Actuate iServer integrates information from any data source and application to serve both internal and external users.

Scalable and Available for Millions of Users

Today's mission-critical enterprise and e-business applications require massive volumes of business information to be delivered accurately and reliably to hundreds of thousands or even millions of users simultaneously. Actuate iServer meets this need with unparalleled scalability and with high availability for 24x7 operation. Featuring such advances as automatic clustering, job control and load balancing, Actuate iServer provides unrivaled scalability to ensure end users receive critical business information rapidly and reliably. Users can view and interact with Actuate reports and fully functional spreadsheets using standard browsers and without any applets or plug-ins, making it easy to distribute reports to large populations without concern for system administration and software upgrade costs. And performance features like Express Content (delivering completed pages as the report is being generated) and Page on Demand for direct-to-page navigation and viewing ensure that end users get the mission-critical information they need the instant they need it.

Integrated with Web, Enterprise and e-Business Environments

Actuate iServer features the industry's most open, standards-based architecture for integration with all web services, enterprise applications, back-end data sources and e-business applications and platforms. At the front end, you can use Actuate's Active Portal or integrate Actuate content seamlessly with the look and feel of your web site, as well as embed Actuate Reportlets framelessly within any unstructured web page.



Actuate iServer delivers information in multiple formats, including interactive web pages and Excel-compatible spreadsheets.

On the back end, Actuate iServer supports live data access from any source, across any corporate infrastructure and firewall environment.

Actuate's Enterprise Information Integration (EII) option directly accesses multiple, heterogeneous data sources concurrently and transforms that data into meaningful business information in real time. And, with its URL-based architecture, pure SOAP-based Web Services API, seamless integration with both J2EE and Microsoft .NET environments and support for open web standards, any Actuate iServer functionality can be embedded into even the most complex enterprise environments rapidly and smoothly.

Personalized, Actionable Reports Any Time, Anywhere

The information needs and technical sophistication of end users vary widely. Some users need on-demand reports from live data that they view once and discard. Executives and line managers need this content in rich, easy-to-use dashboards. Others need in-depth analysis of regularly scheduled and cached information, while some simply want the freshest data dropped into an Excel spreadsheet so they can quickly drill, manipulate and investigate the information themselves. Still others may be external, such as customers, partners or suppliers, who require perfectly formatted, intuitive reports with embedded graphics. Actuate iServer delivers information in multiple formats, including interactive web pages and live Excel spreadsheets.

Actuate iServer handles all of these needs with a range of options for distributing business information to a wide and eclectic array of end users. Actuate Information Objects provide a single, unified metalayer that allows any Actuate product, such as query, spreadsheets and analytics, to work seamlessly with any other. With Actuate iServer, users can view and work within cached reports or spreadsheets or generate their own on demand. They can receive reports in HTML, DHTML, PDF, RTF (Word), Excel or even XML format. Reports can be localized and personalized to ensure that all users receive information that is relevant to them and presented in their chosen language.

Finally, Actuate information is fully actionable, so users can annotate information in their reports or implement workflow operations.

Robust Security and Manageability for Enterprise Deployments

Actuate's enterprise information server provides airtight security and high levels of manageability to meet the needs of today's complex and demanding e-business environments. Actuate iServer is designed to access, integrate and deliver crucial enterprise information on an always available basis, while maintaining privacy and security at all times. All content on the Actuate iServer is centrally secured through either Actuate's role-based security system or existing external user and role-administration

systems, such as LDAP, Active Directory, PeopleSoft or SAP. Actuate's user administration is straightforward, allowing user information such as authorization, authentication, roles and access privileges to live externally, thereby eliminating the need to replicate user and security information across multiple environments.

With support for scheduled and on-demand report generation, caching and alerts, administrators can control the load against data sources while still meeting users' requirements for rapidly delivered mission-critical information.

Policy-based content archiving and automatic report versioning features enable easy management of large volumes of reports and spreadsheets, while a web-based management console allows server administration from any location with maximum flexibility to make the most out of Actuate's industry-leading scalability. Actuate's Additional Volume Option allows organizations to share iServer resources while maintaining independent, project-specific encyclopedias, portal looks and feels and security access models. With Actuate iServer, organizations can manage and administer large-scale reporting environments consisting of millions of users, reports and report iterations.

Active Portal—With Active Portal, organizations receive a fully functioning report and user management environment. Users can choose from multiple “skins” to personalize their experience with Active Portal while accessing stored reports, executing on demand reports or scheduling new jobs.

Actuate Web Services API—Actuate Web Services API is built from the ground up to be a SOAP- and WSDL-compatible platform. Providing access to 100 percent of Actuate’s functionality, the API provides a language-independent means to integrate Actuate services with other applications. Leveraging these web standards, Actuate iServer functions can be delivered as a set of callable web services that include report generation and printing, report encyclopedia management, server administration, viewing, security and authentication services.

These services are accessible to external applications and web services via SOAP calls to the Actuate Web Services API, or using the WSDL descriptions published by Actuate.

Integration with J2EE and .NET—Developers can use industry-standard web editors to integrate and customize Actuate interfaces to align with a web site’s look and feel.

The customization power of Actuate assures consistent interfaces to reporting functionality so that reports look to end users like simply another set of web pages within any portal or site.

Actuate iServer can be seamlessly integrated with J2EE and Microsoft .NET-based application servers through its support of the web services architecture.

This enables programmers to access Actuate functionality using standard .NET and J2EE tools, thereby reducing development time and making integration into enterprise environments more straightforward. This flexibility enables Actuate to interoperate with any development language, any application server or any web server.

Open connectivity to data sources—Actuate iServer supports access to any data source to create reports and spreadsheets, enabling information delivery from anywhere, to anyone. Actuate iServer’s Open Data Access Framework provides access to specialized

data connectors for sources such as: SAP, PeopleSoft, DB2, SQL, Sybase, Oracle DB, Progress, ODBC, JDBC and XML. This open, published framework is extensible to legacy and custom systems.

Actuate also provides native connectivity to popular database management systems such as Oracle, Microsoft SQL Server, Sybase, MySQL and Progress, as well as to JDBC/ODBC connectivity. The server can support access to flat files, any API-enabled data source and business logic implemented as Enterprise JavaBeans, CORBA, COM, or C++ objects. And with its multi-threaded, load balancing operation, Actuate iServer supports access to multiple data sources simultaneously, even fetching live data from different sources for a single report in parallel with millisecond response.

Open server support for external reporting tools—With the Open Server feature, you can use Actuate iServer to execute, secure, store and distribute reports created with other tools.

The Open Server feature is fully extensible, allowing anything from Crystal Reports to C reports to proprietary legacy COBOL reports to be integrated into and managed within a single server environment.

Customized and Interactive Reporting

- *Interactive, actionable content*
- *Flexible reporting*
- *Ad hoc querying*
- *Intuitive analysis*
- *Support for multiple output formats*
- *Embeddable reportlets*
- *Internationalization*

Interactive, actionable content—The data delivered by Actuate iServer can be live and highly interactive. Users can drill to detailed business data or other content using default navigation and data searching facilities that make it simple to find the precise information they require.

Users can also act on Actuate data, updating information in e.Reports and e.Spreadsheets, such that those updates initiate transactions or manage workflow. These updates are captured in the server-stored report to maintain a “single version of the truth.”

Flexible reporting—The Actuate iServer is capable of meeting a wide range of requirements for empowering users with the right reporting content. Its high-performance Express Content feature delivers on-demand reports quickly, as pages are generated to provide end users with instant information. Actuate iServer also supports cached reporting for users who need detailed information from a particular point in time.

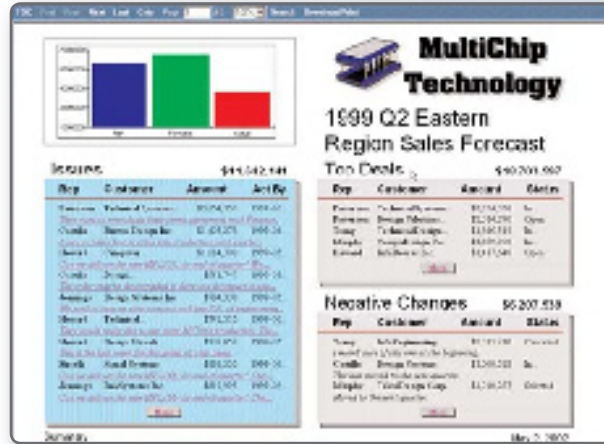
Users can access reporting content on either a “push” or “pull” basis, by simply visiting a web page to access reports or by receiving emails with attached reports. The Actuate iServer also presents users with automatically generated web interfaces that enable users to request parameterized, ad hoc reports.

Ad hoc querying—The Actuate iServer securely stores Information Objects to enable users to perform ad hoc queries against practically any enterprise data source using Actuate Query. Information Objects provide secure access to complex data for all Actuate tools, and Actuate Query provides a simple web interface to enable user self-service access to data.

Intuitive analysis—Through the e.Spreadsheet option, Actuate Analytics and the e.Analysis option, the Actuate iServer offers intuitive analysis capabilities for end users.

e.Analysis is a browser-based tool that lets users view e.Report data in multi-dimensional or other graphical formats, for visualization. Actuate Analytics uses the same interface to deliver power users a highly compressed, personalized OLAP cube to easily slice and dice the information for ad hoc analysis. e.Spreadsheets present data as fully functional spreadsheets for users who prefer to perform their analysis in Microsoft Excel.

Support for multiple output formats—Actuate supports a wide range of output formats for reports generated and managed by the Actuate iServer. These include HTML, DHTML and Excel for visual consumption, Adobe PDF for printing and XML for electronic processing by other applications. This range of output formats enables you to deliver the exact report content your end users want, in the format they prefer, every time.



Actuate's support for Unicode enables you to deliver reporting content for multiple locales simultaneously.

Embeddable reportlets—In addition to standard DHTML, HTML, PDF, Excel and XML formats, Actuate iServer can return report content as a Reportlet™, or partial DHTML page, which can be easily integrated into existing web pages. Reportlets enable web application developers to extract only the Actuate content they need and place it exactly where they want it, so that end users can get reporting content as an embedded and seamless part of their web pages.

Internationalization—Actuate iServer includes many advanced internationalization capabilities that accommodate different languages, cultural contexts, data and time zones. A single Actuate iServer can

automatically deliver and manage reports in multiple languages. Internal Unicode data representation and XML-based locale files enable fast and accurate internationalization of any report.

Security and Manageability

- *Role-based security*
- *Open security directory integration*
- *Page Level Security*
- *Single sign-on*
- *Hierarchical repository*
- *Policy-based archiving*
- *Scheduled report generation*
- *Automatic versioning*
- *Web-based management console*
- *Additional Volume Option*

Role-based security—Actuate iServer incorporates a security system that controls user access to reporting content based on roles and access controls, for an entire report or a subset of content. This allows for easy report content management that can be integrated with existing application- or operating system-level security controls.

Open security directory integration—This feature enables Actuate iServer administrators to leverage existing user administration services, such as LDAP or Active Directory services, to control user access to Actuate reporting content.

User information including authorization, authentication, roles and access privileges can be generated and maintained in external sources, then seamlessly leveraged within the Actuate iServer environment. As a result, administrators only need to establish user information once—not every time they set up or deliver new reports.

Page Level Security—PLS offers the unique ability for IT to create one report that delivers personalized user-by-user content to thousands of users.

PLS greatly reduces stress on transactional systems by executing only one query, report management by generating only one report and report maintenance by automatically inheriting user and role privileges as they are changed in the central system. PLS delights IT by reducing these chores and satisfies end users because they consistently receive their own information quickly and transparently.

Single sign-on—Actuate's security can be integrated with existing web, operating system or application security, so that end users sign on one time only and don't need to navigate through multiple screens to access critical business information.

Hierarchical repository—Actuate iServer offers a hierarchical report-content repository that enables fast and easy management of reports regardless of the volume of report content.

Policy-based archiving—Automatic, policy-based report content archiving makes it easy to manage the contents of the Actuate iServer. Administrators can set archiving policies for the entire server or for individual folders and objects, as required.

Scheduled report generation—Actuate iServer features an advanced scheduling mechanism that allows administrators to specify the frequency with which scheduled reports and spreadsheets are generated, individually or in bulk.

Automatic versioning—With Actuate iServer, you can store multiple versions of the same e.Report or e.Spreadsheet and maintain all versions of these reports simultaneously. This enables you to manage information that is relevant to different users or that is needed across different time periods.

Web-based management console—The Actuate iServer Management Console is a web-based administration tool that enables server management from any web-enabled desktop or device. The tool also supports remote administration through enterprise firewalls, including administration of an Actuate iServer hosted by an Application Service Provider (ASP).

Additional Volume Option (AVO)—Administrators can take advantage of Actuate's AVO to set up and manage separate report volumes using a central management console. AVO enables administrators to administer different, departmental or project-specific report volumes—such as those for human resources, finance and sales—as logically separate applications with separate access controls, business rules and other parameters, without requiring separate hardware and software. It also reduces system and administration costs by maximizing the use of hardware and software resources.

Technical Requirements

| Operating | CPU |
|---|--|
| Windows 2000 Windows Server 2003 Windows XP Pro | Pentium 300 MHz or higher |
| Solaris 8, 9 | Sun: UltraSPARC-I, II, III, III |
| AIX 5.1, 5.2 | IBM: Power, Power2, Power3, Power4, Power4+, PowerPC |
| HP-UX 11.0, 11i | HP: PA-RISC 2.0 |
| Red Hat Enterprise Linux 3.0 AS | Pentium 300 MHz or higher |

Minimum RAM requirements for iServer is 512 MB.
Minimum disk space is 800 MB.

Web Browsers and Document Applications

- Microsoft Internet Explorer 5.0, 5.5, 6.0, 6 SP1
- Netscape Navigator 6.2
- Sun's Mozilla 1.4
- Open Source Mozilla 1.4
- Adobe Reader 5.0, 5.1, 6.0
- Microsoft Excel 97, 2000, 2002, 2003

The technical requirements listed here are for **guideline purposes only**. Please consult Actuate Support Services for the precise requirements for your specific environment.

Application and Web Servers

- Microsoft IIS 5.0 & 6.0
- BEA WebLogic Server 6.1 SP5, 6.1 SP4, 7.0 SP2, 7.0 SP4, 8.1
- IBM Websphere App Server 4.0.5, 5.0.1, 5.1
- Oracle 9i App Server (Release 2) 9.0.3 (for Active Portal only)
- Sun ONE Application Server 7
- Sun ONE Web Server 6.0 SP4, 6.1 SP1
- Apache Tomcat 4.0.6, 4.1.27

Operating system support for application and web servers is the same as iServer.